

Key to the Maps

1 Waypoint: Landmarks during the stage

Pathways:

- GR249 Stage or Alternative Route on the map
- GR249, stage 27 – Other GR249 stage
- GR141 – Another Long-distance route (GR)
- PR-A 243 – Short-distance route (PR)
- SL-A 175 – Local route (SL)
- GR249 overlapping with another GR
- GR249 overlapping with a PR
- GR249 overlapping with an SL
- GR249 overlapping with another GR & a PR
- Another stage overlaps with another GR
- Another stage overlaps with a PR
- Another GR overlaps with a PR
- Another stage overlaps with another GR & a PR
- Another stage overlaps with an SL
- A PR and SL overlap

770 m Summit

Caves

Train Station

Bus Stop

Transport Network:

- A-357 Main Road
- A-92 Dual carriageway or Motorway
- Track or lane
- Railway line

Water features

- Smaller watercourse
- Río Genal River (Larger volume)
- Reservoir or lake

Coastal features

- Shallow water
- Deep water
- T.m. Málaga Municipal boundary
- Provincial boundary
- Parque... Protected natural space
- Buildings – Settlements – Constructions
- 300 Contour lines (equivalent to 100m)
- Contour lines (equivalent to 20m)

Land use:

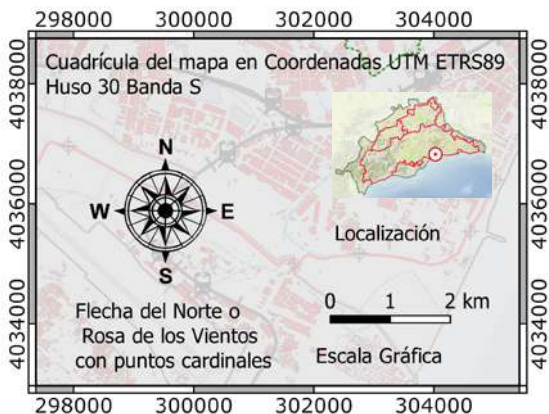
- Land used for livestock grazing, arable farming or unpopulated land
- Flood plains, watercourses or a body of water
- Areas of woodland or thicket

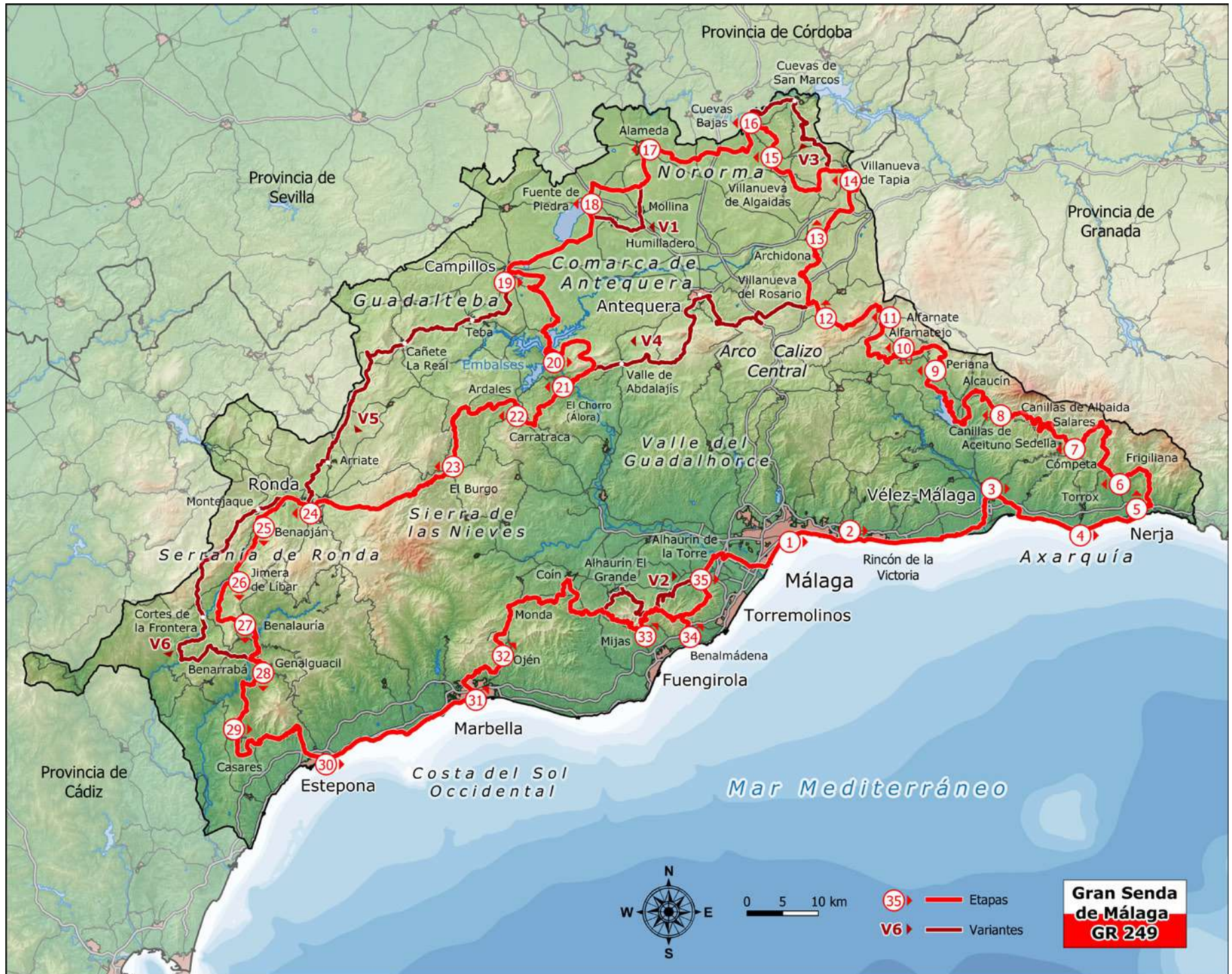
Key to the maps for each stage:

Not applicable to the overview map whose representation and scale are different.

Elements found on the map::

The map's orientation is always to the north, has a grid in UTM ETRS89 coordinates, graphic scale and a location image to position it within the province.





0 5 10 km

- ▶ 35 Etapas
- ▶ V6 Variantes

Gran Senda de Málaga
GR 249