

6. FRIGILIANA • CÓMPETA

Plaza del Ingeniero in Frigiliana(C) (300m)



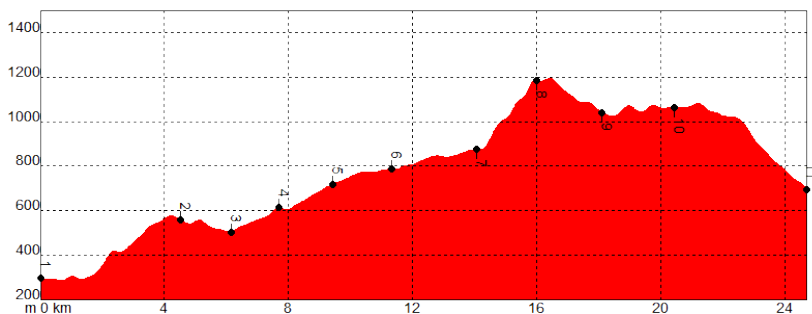
Plaza del Carmen in Cómputa (N) (685m)



24.7 km 8 h 15 min 1.160 m 790 m Linear

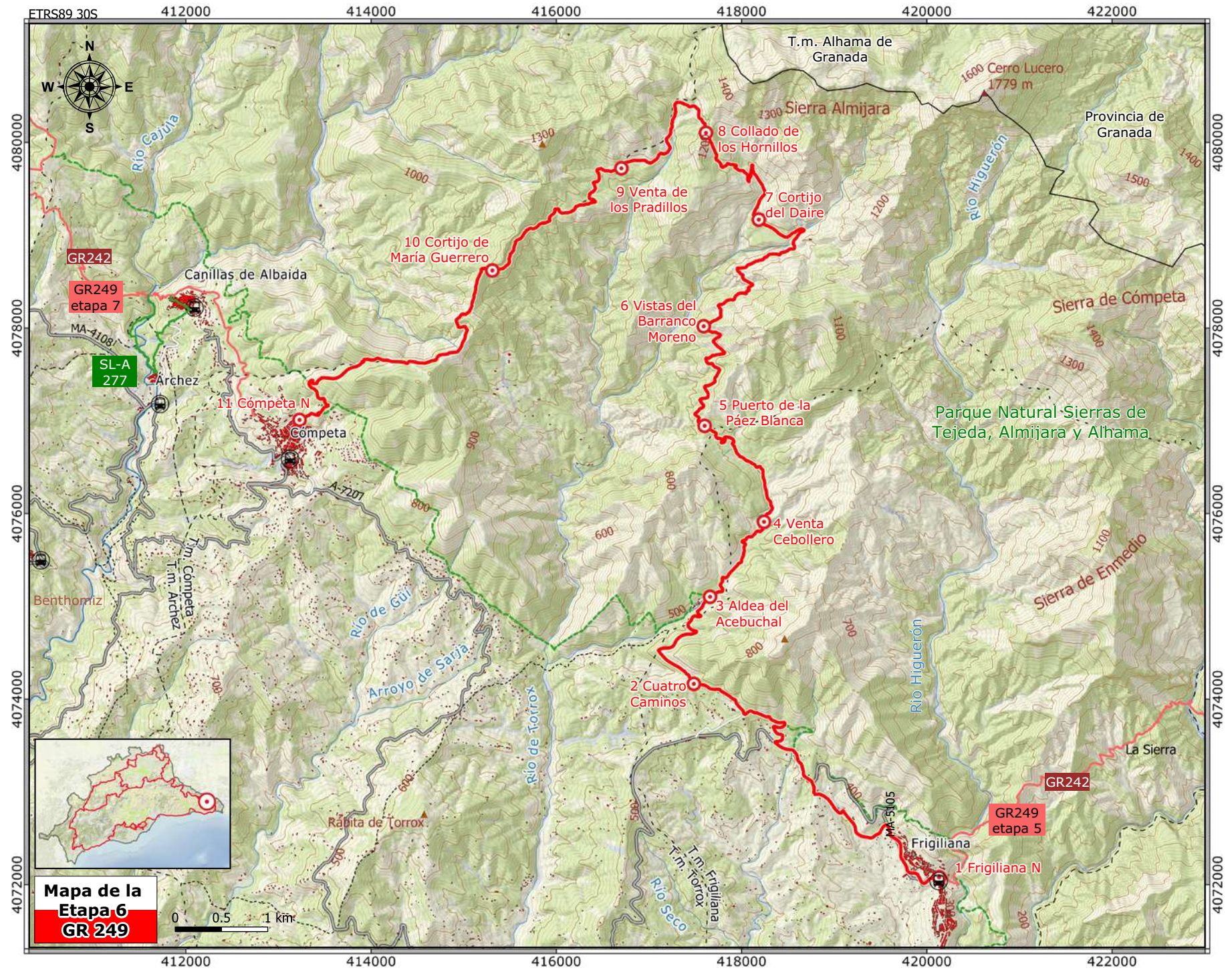
On foot 2.3 km 9.3 km 13.1 km

Environment hazards **1** **2** **3** **4** **5** Underfoot Conditions **1** **2** **3** **4** **5**
 Navigation **1** **2** **3** **4** **5** Physical Effort **1** **2** **3** **4** **5**



- Mountainous terrain and at reasonable Height above SL
- Road traffic circulating up to km 6
- Two short sections on the MA-5105 road

P O I N T	X	Y	HEIGHT ABOVE SL	DISTANCE
1 Frigiliana N	420133 /	4072081 /	300 m	Km 0.0
2 Cuatro Caminos	417485 /	4074165 /	556 m	Km 4.5
3 Village of El Acebuchal	417660 /	4075103 /	500 m	Km 6.2
4 Venta Cebollero	418242 /	4075911 /	610 m	Km 7.7
5 La Páez Blanco Pass	417601 /	4076946 /	713 m	Km 9.5
6 Views of Moreno Ravine	417591 /	4078019 /	774 m	Km 11.3
7 Cortijo del Daire Estate	418186 /	4079169 /	860 m	Km 14,1
8 Collado de los Hornillos	417615 /	4080104 /	1177 m	Km 16,0
9 Venta de los Pradillos	416702 /	4079722 /	1043 m	Km 18,1
10 Cortijo de María Guerrero	415309 /	4078621 /	1066 m	Km 20.5
11 Cómputa N	413227 /	4077010 /	686 m	Km 24,7



Mapa de la Etapa 6 GR 249