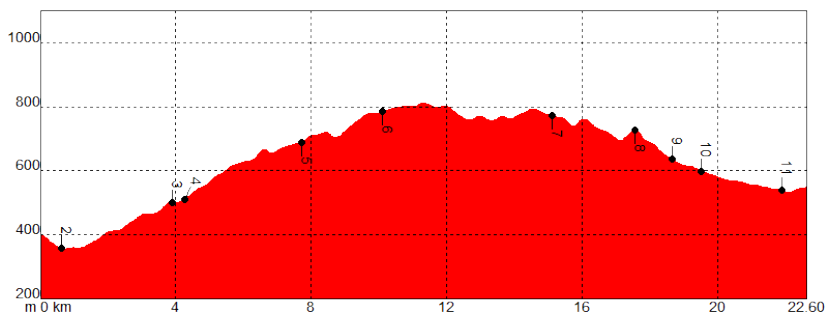


22. ARDALES • EL BURGO

Ardales (W) (375m)				El Burgo (N) (560 m)			
22.6 km		5 h 35 min.		690 m		480 m	
On foot						Linear	
Bike				2.8 km		19.8 km	
0.0 km							
Environment hazards		1	2	3	4	5	Underfoot Conditions
Navigation		1	2	3	4	5	Physical Effort
		1	2	3	4	5	



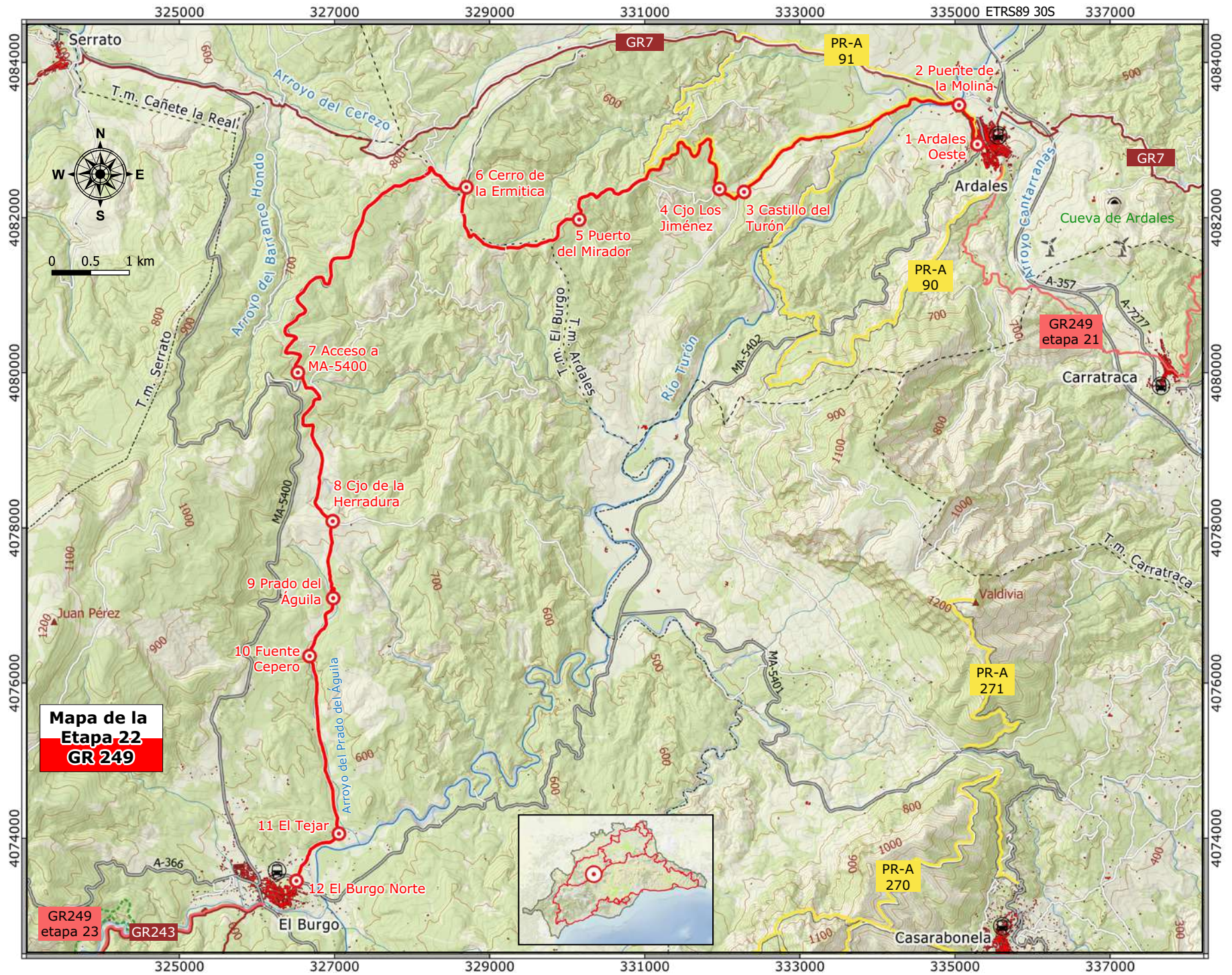
• Traffic circulating on tarmacked roads

PR-A 90 El Calvario Capellán Hill – Turón, overlap at start

PR-A 91 Los Jiménez – Garzón spring

GR7 E4 Links up at the start of the stage

P O I N T	X	Y	HEIGHT ABOVE SL	DISTANCE
1. Ardales, west	335290 /	4082945 /	375 m	Km 0,0
2. La Molina bridge	335050 /	4083450 /	350 m	Km 0,6
3. El Turón castle	332280 /	4082330 /	495 m	Km 3,9
4. Cortijo de los Jiménez estate	331965 /	4082370 /	510 m	Km 4,3
5. El Mirador pass	330155 /	4081975 /	685 m	Km 7,7
6. La Ermitica hill	328700 /	4082390 /	785 m	Km 10,1
7. Access to MA-478 road	326530 /	4080005 /	770 m	Km 15,1
8. Cortijo de la Herradura estate	326975 /	4078085 /	735 m	Km 17,6
9. El Aguila plains	326985 /	4077095 /	645 m	Km 18,6
10. Cepero spring	326680 /	4076350 /	605 m	Km 19,5
11. El Tejar	327055 /	4074060 /	540 m	Km 21,9
12. El Burgo, north	326510 /	4073450 /	560 m	Km 22,6



Mapa de la Etapa 22 GR 249

GR249 etapa 23

GR243